

OrbiPlate™

Jacques Apartments, VIC, Australia



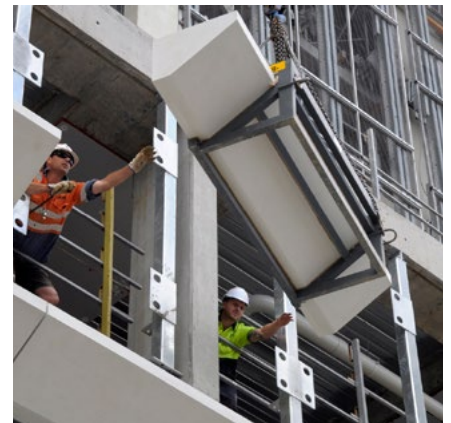
The Project

The Jaques apartment project in Coppin st Richmond features exterior facades surrounding the car parking on the lower levels. GRC Environments were responsible for the manufacture and erection of the light weight hollow composite panels.

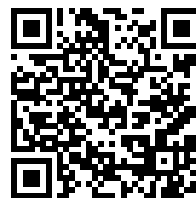
OrbiPlate™ was used to fix each of the panels to the outside of the galvanised steel structural members that will later have crash barriers fitted internally. OrbiPlate™ provided sufficient connection tolerance to enable the facade panels to be quickly bolted into place, dramatically reducing crane time while providing a high strength structural connection.

OrbiPlate™

The patented OrbiPlate™ system delivers connection tolerances of 20mm in any direction to position the main structural M20 bolt. It is comprised of an 80mm main circular washer with an elongated slot surrounded by serrated teeth that provide the effective mechanical lock with a secondary, smaller washer used to position the main structural M20 bolt as required.



For more information,



Watch this video



OrbiPlate™ Web page

For further information, please contact Ramset™

AU - PHONE: 1300 780 063 www.ramset.com.au

NZ - PHONE: 0800 RAMSET (726738) www.ramset.co.nz

Ramset™ 1 Ramset Drive, Chirnside Park, Victoria. 3116. Australia © Copyright October 2023. ITW Australia Pty. Ltd. ABN 63 004 235 063 trading as Ramset™

Important Disclaimer: Any engineering information or advice ("Information") provided by Ramset™ in this document is issued in accordance with a prescribed standard, published performance data or design software. It is the responsibility of the user to obtain its own independent engineering (or other) advice to assess the suitability of the Information for its own requirements. To the extent permitted by law, Ramset™ will not be liable to the recipient or any third party for any direct or indirect loss or liability arising out of, or in connection with, the Information.