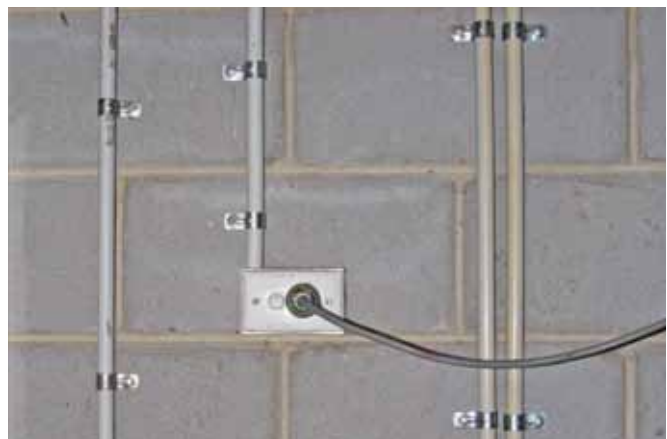


Description

The Ramset™ Nylon Anchor is a removable light duty, impact/rotation setting, interference fit anchor, with a variety of head styles, designed for use in a variety of substrates such as concrete, stone, solid brick, solid block, grout filled block and hollow block.

Specification

Material - Sleeve	Nylon
Material - Drive Screw	Carbon Steel, Stainless Steel 316 (A4)
Corrosion Protection	Zinc Plating
Head Style - Anchor	Mushroom, Round, Countersunk, Flat
Fixing Method	Through Fixture
Setting Method	Impact/Rotation
Anchoring Method	Interference Fit
Drilled Hole Diameters	5mm, 6.5mm
Anchor Lengths	20mm, 25mm, 38mm, 50mm, 75mm
Maximum Fixture Thickness	2mm, 5mm, 13mm, 25mm, 50mm
Substrates	Concrete, Stone, Solid Brick, Solid Block



Features & Benefits

- Available in multiple head styles for versatility.
- The drive screw's saw tooth thread makes it easy to drive and unscrew.
- Requires only small diameter holes for discreet fixing.
- Nylon body provides insulation between drive screw and work surface.

Related Products

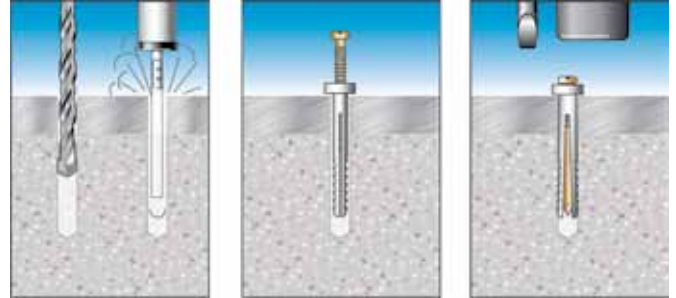
DynaDrill™ / Hammer Drill Driver	Drill Driver
Carbide Drill Bits	Screw Gun
Hole Cleaning Pump	Screwdriver Bits
Wet and Dry Vacuum	

Trades & Applications

	Electrical Contractor	Signwriter	Plumbing Contractor
Electrical Fitting Installation	✓		
Sign Installation		✓	
Pipe/Conduit Saddle Installation	✓		✓

Installation

1. Drill a hole to the recommended diameter and depth using the fixture as a template. If the fixture thickness is less than the maximum, increase the hole depth accordingly. Remove the debris with a hand pump, compressed air, or vacuum.
2. Insert the anchor through the fixture until the collar of the anchor contacts the fixture.
3. Screw or hammer home the drive screw until the head is flush with the collar of the anchor. The drive screw can easily be removed with a screwdriver.


Light Duty Anchors


Nylon Anchor - Mushroom Head

Part No	Anchor Size (mm)	Anchor Length (mm)	Drilled Hole Ø (mm)	Hole Depth (mm)	Max Fixture Thickness (mm)	Order Qty
TNM320	5	20	5	25	2	100
TNM325#	5	25	5	30	5	100
TNM425#	6.5	25	6.5	30	5	100
TNM438	6.5	38	6.5	40	13	100
TNM450	6.5	50	6.5	45	25	100
TNM475	6.5	75	6.5	55	50	50

Available with stainless steel expansion nail. Add SS to end of Part No.



Nylon Anchor - Round Head

Part No	Anchor Size (mm)	Anchor Length (mm)	Drilled Hole Ø (mm)	Hole Depth (mm)	Max Fixture Thickness (mm)	Order Qty
TNR325#	5	25	5	30	5	100
TNR338	5	38	5	40	13	100
TNR425	6.5	25	6.5	30	5	100
TNR438	6.5	38	6.5	40	13	100
TNR450	6.5	50	6.5	45	25	100

Available with stainless steel expansion nail. Add SS to end of Part No.



Nylon Anchor - Countersunk Head

Part No	Anchor Size (mm)	Anchor Length (mm)	Drilled Hole Ø (mm)	Hole Depth (mm)	Max Fixture Thickness (mm)	Order Qty
TNF425	6.5	25	6.5	30	5	100
TNF438	6.5	38	6.5	40	13	100
TNF450	6.5	50	6.5	45	25	100
TNF475	6.5	75	6.5	55	50	50



Nylon Anchor - Flat Head

Part No	Anchor Size (mm)	Anchor Length (mm)	Drilled Hole Ø (mm)	Hole Depth (mm)	Max Fixture Thickness (mm)	Order Qty
TNL325	5	25	5	30	5	100