



Description

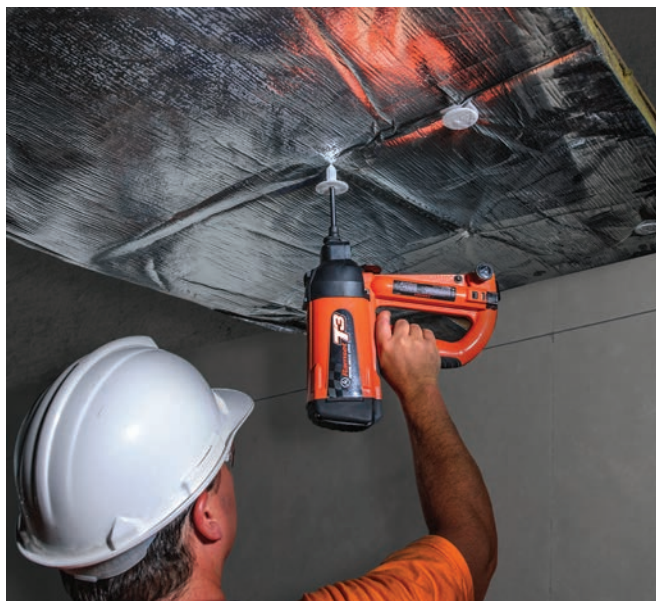
The fastest insulation fixing system! This new gas technology system provides effortless overhead fixing of insulation with virtually no recoil. The low tool compression force enhances user comfort.

Specifications

Weight	3.5kg
Height	363mm
Length	466mm
Impact Force	100J
Actuation Pressure	3.5kg
Intermittent Operation	1 pin per second
Fuel Cell Life	1,000 pins (approx)
Battery Charge Capacity	3,000 pins (approx)
Battery Voltage	6V
Battery Charge time	3 hour
Power Regulation	Automatic
Operating Temperature Range	-5°C to 49°C

Substrates

Concrete, Composite Steel Decking, Solid Brick, Precast Concrete, Steel Pre-stressed Concrete, Hollow Block Wall, Reinforced Concrete, Reinforced Prefabricated Concrete



Features & Benefits

- The fastest insulation fixing system
- Virtually no recoil!
- 3 times less cocking force required than explosive powered tools
- Faster install than explosive powered tools - lower in place cost
- Automatic power adjustment
- Fixes to concrete and steel without the need for adjustment
- Compatible with all major insulation types
- Low insertion force
- Textured face for compatibility with rendering applications
- Sizes to suit soft and rigid insulation from 25mm to 100mm
- Soft insulation with thickness greater than 100mm may be compressed.

Related Products

Drive Pins & Fuel Cells

Trades & Applications

	Insulation Installers	Ceiling & Partitioning Contractor
Insulation to concrete	✓	✓
Insulation to steel	✓	✓



Standard Operating Procedure

Always read and understand the instruction manual before attempting to operate a Ramset™ Gas Technology Tool.

1. First insert the fuel cell and battery into the tool.
2. The insulation fastener should then be placed on the end of the fastener guide without compressing the front end of the tool.
3. The insulation fastener should then be forced through the insulation by pushing on the tool.
4. The tool should then be compressed against the work surface. (Making sure that the tool is perpendicular to the work surface).
5. Once the tool is compressed, and the insulation fastener is in contact with the work surface, the trigger can be actuated and the faster is driven into the substrate securing the insulation fastener in place.



InsulFast™ GT

Part No	Description	Order Qty
T3IF	InsulFast™ GT3 Pulsar™ Tool + 2 x Batteries	1

Kit includes: InsulFast™GT Pulsar™ tool, high impact carry case, 2 x batteries, battery charger, safety glasses, allen key, dust cover and instruction manual



Accessories

Part No	Description	Order Qty
PA1613	Safety Glasses	1
B0092	Battery	1
900507	In-car Charger	1
B0020	Replacement Charger	1
TFPS	AC / DC Adaptor	1
B20544L	Gas Tool Degreaser and Lubricant	1



Fastener Specification

Fastener Body Material	High Density Polyethylene (HDPE)
Holding Diameter	60 mm
Lengths Available	25 mm to 100 mm
Drive Pin Material	Carbon Steel
Drive Pin Plating	Mechanical Zinc Plate
Drive Pin Shear Strength	8.0 kN



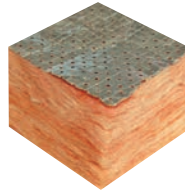
Compatible Insulation



Extruded Polystyrene



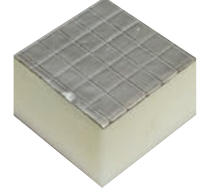
Polyester



Fibreglass / Rockwool



Expanded Polystyrene



Polyurethane Foam & Polyisocyanurate

Insulation Fasteners for Concrete, Masonry and Steel

Part No. InsulFastGT InsulFastGT2	Part No. InsulFastGT3	Rigid Insulation Thickness	Soft Insulation Thickness	Fastener Colour *	Order Qty
IG625	T3IG625	25mm	25mm – 30mm	Natural (White)	400
IG625B	T3IG625B	25mm	25mm – 30mm	Black	400
IG638	T3IG638	38mm	38mm – 45mm	Natural (White)	350
IG650	T3IG650	50mm	50 mm – 55mm	Natural (White)	300
IG650B	T3IG650B	50mm	50 mm – 55mm	Black	300
IG663#	T3IG663#	60mm	60mm – 65mm	Natural (White)	500
IG675	T3IG675	75mm	75mm – 85mm	Natural (White)	250
IG675B	T3IG675B	75mm	75mm – 85mm	Black	250
IG6100	T3IG6100	100mm	100mm – 110mm	Natural (White)	200

Fuel Cells are included with all fasteners.

* Other sizes and colours such as silver, to a maximum of 100mm in length are available on request. Minimum order quantities and lead times apply.

Available on request

Technical Load Data

Part No.	Concrete Strength	Tensile Working Load Limit WLL
IG625	25 – 45 MPa	0.15 kN
IG625B	25 – 45 MPa	0.15 kN
IG638	25 – 45 MPa	0.15 kN
IG650	25 – 45 MPa	0.15 kN
IG650B	25 – 45 MPa	0.15 kN
IG663	25 – 45 MPa	0.15 kN
IG675	25 – 45 MPa	0.15 kN
IG675B	25 – 45 MPa	0.15 kN
IG6100	25 – 45 MPa	0.15 kN

The recommended load (kN) are calculated from the mean ultimate load and a factor of safety higher than 4.

A minimum of 4 fixings per fastened unit are required.

As concrete composition varies jobsite testing is recommended.